

Milton Public Library

Newsletter

February 2012



Quick Links

[Library Events](#)
[Library Catalog](#)
[Library Web Page](#)
[Friends of the Library](#)
[Milton Library Foundation](#)

Hours

Mo, Tu, We:	9-9
Thursday	1-9
Friday	9-5:30
Saturday	9-5
Sunday	1-5

In This Letter:

Children's Room

- New Children's Librarian Sara Truog

Collection Update

Events

- Appalachian Trail, Feb. 5
- Handicapping the Oscars, Feb. 23

Exhibits

- 350th Anniversary Art Exhibit
- Clifton Fasch

News

- Get New Book Alerts!

Teens

- Teen Choice Movie
- Teen Free Game Playing

Friends

- Friends Meeting Feb. 9

Holiday Schedule

The Library will be closed on February 20.

News

Get **email updates** of what's new in the library collection! **Sign up** for your weekly new book alerts update and keep tabs on what has just come into the library!

New Book Alerts

BOOKS, MOVIES, MUSIC & MORE

The Library and Library Trustees always value the opinions you give in to help us deliver better library service. To make it easier to provide feedback, we have deployed **Suggestion Boxes** and an online **Suggestion Blog**. The Library Director will review the suggestions made and log them on our blog with a personal reply. Please take advantage of these opportunities to let us know what you think of the Library!



Phil McNulty
Library Director

Events at the Library

For the up-to-the minute library calendar, [click here](#).

Events at the Library

Programs:



Appalachian Trail with Roger Tetrault **Sunday, February 5 @ 2pm**

Hiker, **Roger Tetrault**, will share his 2,176-mile hike of the Appalachian Trail with a presentation that captures the sights & sounds of his fabulous adventure. Come hear his tales of extreme weather, wild animal encounters and his encounters with fellow hikers.



Handicapping the Oscars **Thursday, February 23 @ 7pm**

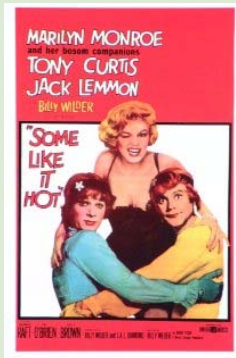
Film Critics, **Wesley Morris & Ty Burr** of the Boston Globe will join us for another informative & entertaining evening. Best film, best actor/actress, who will win, who should win? Mr. Morris & Mr. Burr will delight us with their insights. Sponsored by the Milton Library Foundation.

Concerts:

Irish Music with musical group, Kililagh
Saturday, February 11 @ 2pm

Celebrate St. Patrick's Day a little early! Join us for an afternoon of traditional Irish music with musicians, John Coe & Brian Queally & their band, **Killilagh**. All ages will enjoy this festive celebration of Irish culture & song.

Classic Movie Series:



Some Like It Hot

Thursday, February 16 @ 6:15pm

Join host, **Jeff Stoodt** for Milton Library's "Classic Movie Series". Jeff will introduce this comedy about two musicians who witness a mob hit, then disguise themselves as women to avoid detection & the hilarious mayhem that ensues @ 6:15pm with a trivia quiz & prizes. The film will immediately follow at 6:30pm sharp. Starring Marilyn Monroe, Tony Curtis & Jack Lemmon.

Milton Library Book Discussion:

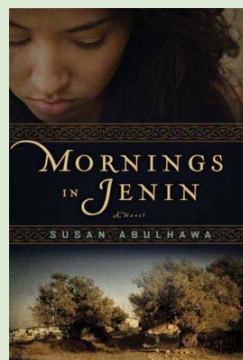
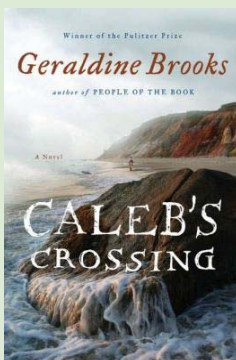


Monday, February 6 @ 7:30pm

Our February book is *Shanghai Girls* by *Lisa See*. The book group meets the first Monday of the month & we offer two venues for our book discussions, the Library @ 7:30pm and Winter Valley @10am. All are welcome, please feel free to join us for a fun & lively discussion.

Our March 2nd book is *Caleb's Crossing* by Geraldine Brooks.

April's Discussion will feature *Mornings in Jenin* by Susan Abulhawa



Watch for these early March Events:

**Closets & Wardrobes De-Mystified
Saturday, March 3**

**Que Sera Seurat; Painting with Greg Maichack
Monday, March 5**

Space is limited & registration will be required for this workshop.

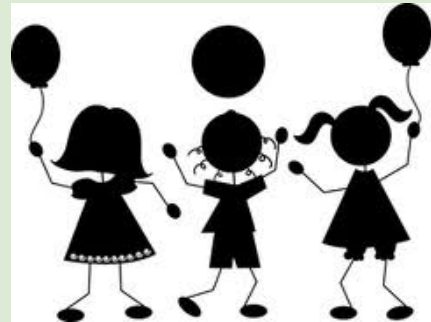
Continuing...

Job Doctor with Roni Noland Monday Mornings @ 10:30am

Career Counselor, Roni Noland is available to answer your questions about resumes & cover letters, networking, social networking, interviewing & job search strategy. Free and open to all Milton Library patrons.

All programs are free & graciously sponsored by
the Friends of the Milton Public Library.

Children's Room



Children's Programs:

Make a Valentine!

Wednesday, February 8 - Noon til 8pm

Children 12 & under are invited to drop-in & make a valentine for that someone special. We supply the material, you supply the imagination.

Art with Ginny

Saturday, February 11 @ 1:30pm

Ginny Brearley returns to lead children grades K-2 in a creative art project. Registration is required.

Yoga Woga

Tuesdays @ 10:30 am beginning February 21

Certified children's yoga instructor, Jill Pokaski Azar is back to lead children ages 3-5 in this introductory yoga class. This program will continue for 6 weeks, but with a separate registration required for each week.

Pirate Magic Show

Tuesday, February 21 @ 2pm

Magic, juggling...a pirate themed extravaganza! Fun for all ages!!

Happy Birthday Author!

Thursday, February 23 @ 2pm

Mo Willems is our featured author. Mo is the author of children's favorites, *KnuffleBunny*, and *the Elephant & Piggie* books. Stories, fun & games galore. Registration is required.

Mad Science

Saturday, February 25 @ 1:30pm

Take the mystery out of chemistry in this Che-Mystery workshop. Mix & observe chemicals, potions & solutions in action. Grades 3-6. Registration is required.

For the baby & preschooler in your life Elaine & Sarah offer these weekly
programs:

Drop-in, no registration required.

Puppets Plus "New, New" for preschoolers on **Mondays @ 10am.**

Small Wonders for babies & toddlers on **Wednesdays @ 9:30am, 10:15am & 11am.**

Time for Tales for preschoolers on **Fridays @ 10:30am.**

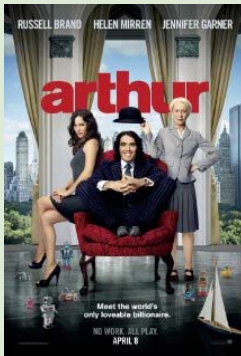
Meet Sara:

Join us in welcoming our new children's librarian, Sara Truog. Sara joins Elaine & Patti in bringing new children's programs to our library & is in the process of setting-up a children's room blog. Find out what's new, what's happening & other upcoming children's events at miltonchildrensroom.wordpress.com.

All programs are free and graciously sponsored by the Friends of the Milton Public Library.

Teens

February Teen Programs:



Teen Choice Movie Friday, February 10 @3pm

Your choice of movie! Vote for the movie you would like to see at our teen page or on Facebook, then join us on the 10th for an afternoon at the movies. Snacks provided!

Teen Free Play Gaming Wednesday, February 29 @ 3pm

Join us for Wii play, board games and snacks.

All programs are free & graciously sponsored by the Friends of the Milton Public Library.

Join us on Facebook



Milton Library Teen Services has a new Facebook page. You can find us at "[Milton Public Library Teen Services](#)"

Exhibits

Milton's 350th Anniversary Celebrations start off with a wonderful exhibit of 24 Milton artists in the Wotiz Gallery. - Phil McNulty

Paul's Bridge, Milton Landing, Turner's Pond, Milton Hill and other beautiful locales have been captured in paint by 24 Milton artists. Their artwork will be on

exhibition in the Wotiz Gallery of the Milton Public Library during the months of January and February 2012. The exhibition is the opening event in the 350th celebration of Milton's founding as a Town separate from Dorchester.

The watercolors of Miriam Wotiz and Elva Proctor, two of Milton's oldest artists will be exhibited. Oils, and acrylics by other professional and amateur artists living in Milton depict

flowers and gardens in backyards, the Farmers' Market, and the old Town Hall. Thirteen of the paintings were used to illustrate the "350th Calendar Celebrating Milton."



1

The Milton Historical Society will open their exhibit of the works of Milton photographer **Clifton Lawrence Fasch** on January 21st. Many of you will remember Fasch's Studio in Milton Village. The exhibit will feature photos taken over four decades from 1946 to 1980. Photos depicting the same location over time promise to be some of the most intriguing of the exhibit.

1. *This watercolor by Judith Phakos graces the cover of the 350th Anniversary Celebration Committee's 2012 calendar. Get a copy of the wonderful art in this calendar and support the efforts of the committee by purchasing it at one of the [350th Events](#), or at their [Online Store](#).*

Friends

Visit the Friends Book Shop

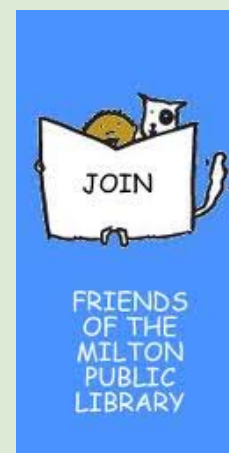
The book shop gets dozens and dozens of new donations every day! Stop by in the Library Lower Level to see a great selection of lightly used books.

Book Shop Hours are:

- Tuesday 10am-2pm
- Wednesday 6:30am-8:30pm
- Friday 10am-Noon
- Saturday 10am-2pm.

Friends of the Milton Library Meeting Thursday, February 9 @ 7pm Conference Room

Learn more about the Friends of the Library & our plans for the Winter & Spring. We'll discuss programming for adults, young adults & children, plus other activities



in support of the Library.

Joining the Friends is even easier!

You may now pay your Friends Membership renewal or first-time membership online with a credit card or PayPal.

- To Join/Renew and Pay online: [Online Membership](#)
- To get a printed form to mail or bring to us: [Printed Membership Form](#)

Become a Friends volunteer.

Volunteers are always welcome to help out with our book sales and on special programs. Email [Connie Spiros](mailto:cdspiros@comcast.net), cdspiros@comcast.net, if you can help!

Collection

Recent picks from our [New Book Alert Service](#):



What should you read next?

Look to our [Novelist Service](#) to help you choose!



Use Novelist to:

- ~ Find read-alikes for your favorite authors
- ~ See the publication order for your favorite series
- ~ See what is new in your favorite fiction genres

Example: Want to find something similar to Dan Brown's *The Lost Symbol*?
[Click this Novelist Link](#) and see the suggestions on the right side of the screen.

Best Sellers

- [New York Times Fiction](#)
- [New York Times Nonfiction](#)
- [New York Times Children's Chapter Books](#)
- [Publishers Weekly Fiction](#)
- [Publishers Weekly Nonfiction](#)

[More best seller lists](#)

[Forward email](#)



Try it FREE today.

This email was sent to pmcnulty@ocln.org by pmcnulty@ocln.org | [Update Profile/Email Address](#) | Instant removal with [SafeUnsubscribe™](#) | [Privacy Policy](#).

The Friends of the Milton Public Library | 476 Canton Avenue | Milton | MA | 02186